

17.Rear Accessory Power Supply Socket

A: WIRING DIAGRAM

Refer to “Rear Accessory Power Supply Socket System” in the wiring diagram. <Ref. to WI-344, WIRING DIAGRAM, Rear Accessory Power Supply Socket System.>

B: REMOVAL

1) Disconnect the ground cable from battery. <Ref. to NT-5, BATTERY, NOTE, Note.>

NOTE:

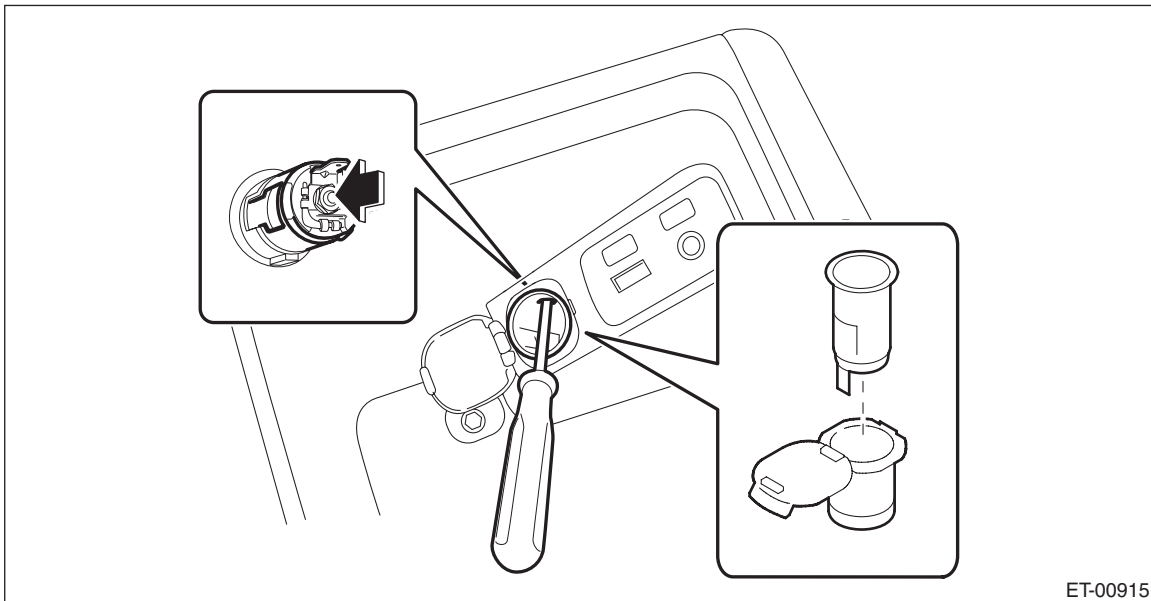
For models other than STI model, disconnect the ground terminal from battery sensor.

2) Remove the console box assembly. <Ref. to EI-67, REMOVAL, Console Box.>

3) Remove the socket assembly.

(1) Disconnect the connector. (STI model)

(2) While releasing the claw inside, press it in from the rear to remove the socket assembly.



ET-00915

(3) Remove the cap - socket.

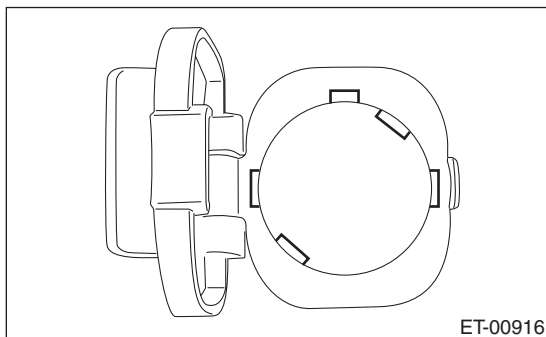
C: INSTALLATION

1) Install the cap - socket.

2) Install the socket assembly.

NOTE:

Align the groove of the cap - socket with the claw of the socket assembly.



ET-00916

3) Install the console box assembly.

4) Connect the battery ground terminal. <Ref. to NT-5, BATTERY, NOTE, Note.>

NOTE:

For models other than STI model, connect the ground terminal to battery sensor.